

GLORY TOPCon

FCF_BEF / 132 cells

705 W - 730 W

Mono-Crystalline Bifacial PV Module

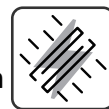
United Renewable Energy Co., Ltd. (a company from Taiwan where the sun shines) Glory TOPCon module uses URECO TOPCon monocrystalline bifacial solar cells, and URECO advanced double glass(G2G) module manufacturing technology.



Key Features



Multi-Bus bar/ TLS technology
Increase the stability of outdoor power generation



Better bifaciality
High bifacial rate



PID resistance
Excellent PID resistance performance



Enhanced performance warranty
Zero light induced degradation effect/
Excellent low light performance



30-Year
Power output warranty



Superior temperature coefficient
Better performance in high temperature



Electrical Data

Model		Bifacial Gain			Bifacial Gain			Bifacial Gain		
		FCF705BEF	5%	10%	FCF710BEF	5%	10%	FCF715BEF	5%	10%
Maximum Rating Power (Pmax)	[W]	705	740	776	710	746	781	715	751	787
Module Efficiency	[%]	22.70	23.84	24.97	22.86	24.00	25.15	23.02	24.17	25.32
Open Circuit Voltage (Voc)	[V]	47.78	47.78	47.78	47.96	47.96	47.96	48.14	48.14	48.14
Maximum Power Voltage	[V]	41.00	41.00	41.00	41.16	41.16	41.16	41.32	41.32	41.32
Short Circuit Current (Isc)	[A]	18.20	19.11	20.02	18.24	19.15	20.06	18.28	19.19	20.11
Maximum Power Current	[A]	17.20	18.06	18.92	17.25	18.11	18.98	17.30	18.17	19.03
Model		FCF720BEF	5%	10%	FCF725BEF	5%	10%	FCF730BEF	5%	10%
Maximum Rating Power (Pmax)	[W]	720	756	792	725	761	798	730	767	803
Module Efficiency	[%]	23.18	24.34	25.50	23.34	24.51	25.67	23.50	24.68	25.85
Open Circuit Voltage (Voc)	[V]	48.63	48.63	48.63	49.12	49.12	49.12	49.61	49.61	49.61
Maximum Power Voltage	[V]	41.52	41.52	41.52	41.72	41.72	41.72	41.92	41.92	41.92
Short Circuit Current (Isc)	[A]	18.32	19.24	20.15	18.36	19.28	20.20	18.40	19.32	20.24
Maximum Power Current	[A]	17.34	18.21	19.07	17.38	18.25	19.12	17.41	18.28	19.15

*Standard Test Condition (STC): Cell Temperature 25 °C, Irradiance 1000 W/m², AM 1.5

*Values without tolerance are typical numbers. Measurement tolerance: ±3%

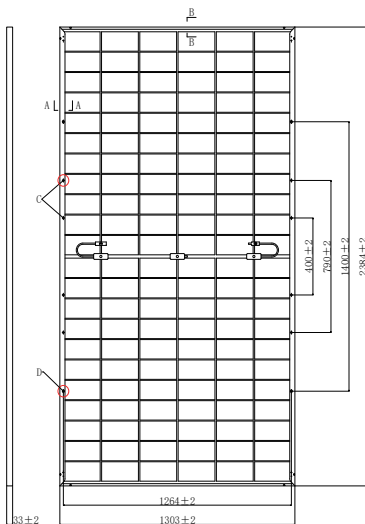
Mechanical Data

Item	Specification
Dimensions	2384mm (L) ¹ x 1303 mm (W) ¹ x 33 mm (D) ² / 98.86" (L) ¹ x 51.30" (W) ¹ x 1.30" (D) ²
Weight	37.50 kg / 82.67 lbs
Solar Cell	N-type Mono, 132 monocrystalline cells
Front Glass	Heat Strengthened Glass, 2.0mm thickness
Rear Glass	Heat Strengthened Glass, 2.0mm thickness
Frame	Anodized aluminium alloy
Junction Box	IP68 (3 diodes)
Connector Type	MC4 Compatible
Cable	4mm ² , Portrait: +400mm/ -200mm Cable length can be customized
Package Configuration	33 pcs Per Pallet, 594 pcs per 40' HQ container

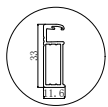
¹ : With assembly tolerance of ± 2 mm [± 0.08"]

² : With assembly tolerance of ± 0.8 mm [± 0.03"]

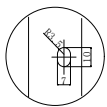
Engineering Drawing (mm)



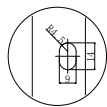
A Long Frame



B Short Frame



C Mounting Hole



D Mounting Hole

Operating Conditions

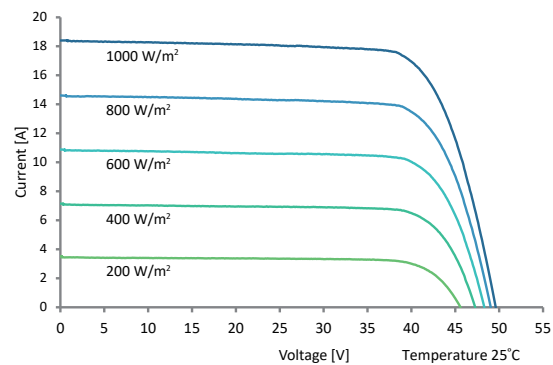
Item	Specification
Mechanical Load	5400 Pa
Maximum System Voltage	1500 VDC
Series Fuse Rating	35 A
Operating Temperature	-40 to 85 °C

Temperature Characteristics

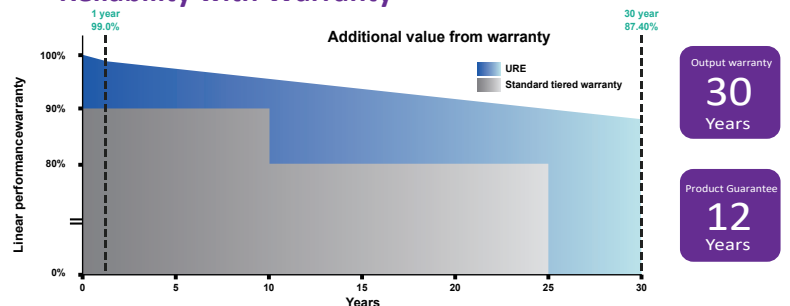
Item	Specification
Nominal Module Operating Temperature	45 °C ± 2 °C
Temperature Coefficient of Isc	0.045 % / °C
Temperature Coefficient of Voc	-0.25 % / °C
Temperature Coefficient of Pmax	-0.28 % / °C

*Nominal module operating temperature (NMOT): Air mass AM 1.5, irradiance 800W/m², temperature 20°C, windspeed 1 m/s.

Dependence on Irradiance



Reliability with Warranty



For more information, please visit us at www.urecorp.com

Taipei Office

9F, No. 295, Tiding Blvd. Sec. 2
Taipei, Taiwan 11493

Tel : +886-2-2656-2000
Fax : +886-2-2656-0593
e-mail : sales@urecorp.com

Headquarters

No. 7, Li-Hsin 3rd Road, Hsinchu Science Park
Hsinchu city 30078, Taiwan

Tel : +886-3-578-0011
Fax : +886-3-578-1255